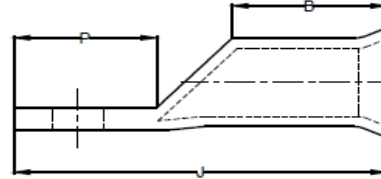
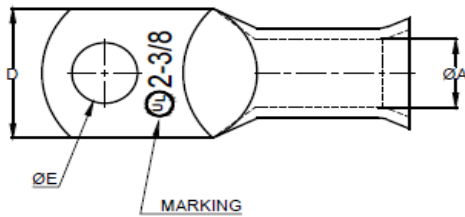
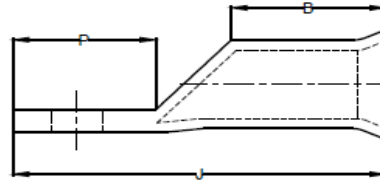
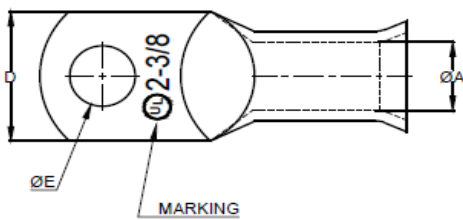


Tin Plated Copper Battery Cable Lugs



Cat No	Cable Size	Stud Size	DIMENSIONS						
			Stud Hole	Barrel ID	Palm Width	Barrel Length	Tongue length	Total Length	No of Crimps
			E	A	D	B	P	J	
916400	8	10	0.200	0.190	0.465	0.470	0.686	1.313	1
916500	8	1/4	0.260	0.190	0.465	0.470	0.686	1.313	1
916600	8	5/16	0.320	0.190	0.465	0.470	0.686	1.313	1
916800	8	3/8	0.400	0.190	0.590	0.47	0.686	1.313	1
918800	8	1/2	0.520	0.190	0.790	0.470	0.850	1.469	1
916405	6	10	0.200	0.232	0.465	0.500	0.758	1.469	1
916505	6	1/4	0.260	0.232	0.540	0.500	0.758	1.469	1
916605	6	5/16	0.320	0.232	0.540	0.500	0.758	1.469	1
916805	6	3/8	0.409	0.232	0.540	0.500	0.758	1.469	1
918810	6	1/2	0.515	0.232	0.670	0.500	0.831	1.542	1
916415	4	10	0.200	0.280	0.545	0.470	0.686	1.313	1
916515	4	1/4	0.260	0.280	0.545	0.530	0.701	1.531	1
916615	4	5/16	0.320	0.280	0.545	0.530	0.701	1.531	1
916815	4	3/8	0.409	0.280	0.545	0.530	0.701	1.531	1
918815	4	1/2	0.515	0.28	0.765	0.530	0.850	1.688	1
916525	2	1/4	0.260	0.336	0.650	0.600	0.765	1.690	1
916625	2	5/16	0.320	0.336	0.650	0.600	0.765	1.690	1
916825	2	3/8	0.409	0.336	0.650	0.600	0.765	1.690	1
918825	2	1/2	0.515	0.336	0.750	0.600	0.825	1.750	1
916635	1	1/4	0.260	0.360	0.645	0.630	0.760	1.718	1
916535	1	5/16	0.320	0.360	0.645	0.630	0.760	1.718	1
916835	1	3/8	0.410	0.360	0.645	0.630	0.760	1.718	1
918835	1	1/2	0.515	0.360	0.750	0.630	0.887	1.845	1

Tin Plated Copper Battery Cable Lugs, cont'd.



Cat No	Cable Size Awg	Stud Size	DIMENSIONS						
			Stud Hole	Barrel ID	Palm Width	Barrel Length	Tongue length	Total Length	No of Crimps
			E	A	D	B	P	J	
916545	1/0	1/4	0.260	0.400	0.725	0.690	0.786	1.845	1
916645	1/0	5/16	0.320	0.400	0.725	0.690	0.786	1.845	1
916845	1/0	3/8	0.410	0.400	0.725	0.690	0.786	1.845	1
918845	1/0	1/2	0.515	0.400	0.725	0.690	0.831	1.890	1
916555	2/0	1/4	0.260	0.460	0.825	0.86	0.932	2.236	1
916655	2/0	5/16	0.320	0.460	0.825	0.86	0.932	2.236	1
916855	2/0	3/8	0.410	0.460	0.825	0.86	0.964	2.268	1
918855	2/0	1/2	0.515	0.460	0.825	0.86	0.964	2.268	1
916565	3/0	1/4	0.260	0.510	0.910	0.800	1.010	2.270	1
916665	3/0	5/16	0.320	0.510	0.910	0.800	1.010	2.270	1
916865	3/0	3/8	0.410	0.510	0.910	0.800	1.010	2.270	1
918865	3/0	1/2	0.515	0.510	0.910	0.800	1.010	2.270	1
916575	4/0	1/4	0.260	0.560	1.015	1.02	0.999	2.563	1
916675	4/0	5/16	0.320	0.560	1.015	1.02	0.999	2.563	1
916875	4/0	3/8	0.410	0.560	1.015	1.02	0.999	2.563	1
918875	4/0	1/2	0.515	0.560	1.015	1.02	0.999	2.563	1
916585	250 Kcmil	5/16	0.320	0.630	1.090	1.020	1.256	2.906	1
916885	250 Kcmil	3/8	0.410	0.630	1.090	1.020	1.256	2.906	1
918885	250 Kcmil	1/2	0.515	0.630	1.090	1.020	1.256	2.906	1